

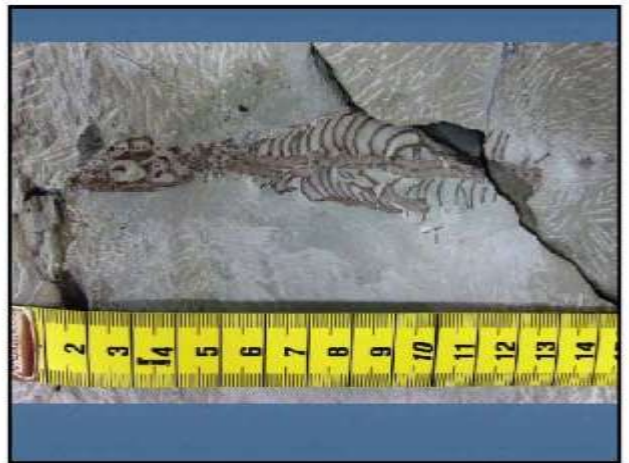


| Strat.      | Str.               | Profil  | Hoogte  | Diepte             | Opmerking          |
|-------------|--------------------|---------|---------|--------------------|--------------------|
| Pleistocene | Holocene           | 1       | 0-10    | 0-10               | Gravel, sand, silt |
|             |                    | 2       | 10-20   | 10-20              | Gravel, sand, silt |
|             |                    | 3       | 20-30   | 20-30              | Gravel, sand, silt |
|             | Middle Pleistocene | 4       | 30-40   | 30-40              | Gravel, sand, silt |
|             |                    | 5       | 40-50   | 40-50              | Gravel, sand, silt |
|             |                    | 6       | 50-60   | 50-60              | Gravel, sand, silt |
|             | Early Pleistocene  | 7       | 60-70   | 60-70              | Gravel, sand, silt |
|             |                    | 8       | 70-80   | 70-80              | Gravel, sand, silt |
|             |                    | 9       | 80-90   | 80-90              | Gravel, sand, silt |
|             |                    | 10      | 90-100  | 90-100             | Gravel, sand, silt |
| Pleistocene | 11                 | 100-110 | 100-110 | Gravel, sand, silt |                    |
|             | 12                 | 110-120 | 110-120 | Gravel, sand, silt |                    |
|             | 13                 | 120-130 | 120-130 | Gravel, sand, silt |                    |
| Pleistocene | 14                 | 130-140 | 130-140 | Gravel, sand, silt |                    |
|             | 15                 | 140-150 | 140-150 | Gravel, sand, silt |                    |
| Pleistocene | 16                 | 150-160 | 150-160 | Gravel, sand, silt |                    |
|             | 17                 | 160-170 | 160-170 | Gravel, sand, silt |                    |
| Pleistocene | 18                 | 170-180 | 170-180 | Gravel, sand, silt |                    |
|             | 19                 | 180-190 | 180-190 | Gravel, sand, silt |                    |
| Pleistocene | 20                 | 190-200 | 190-200 | Gravel, sand, silt |                    |
|             | 21                 | 200-210 | 200-210 | Gravel, sand, silt |                    |







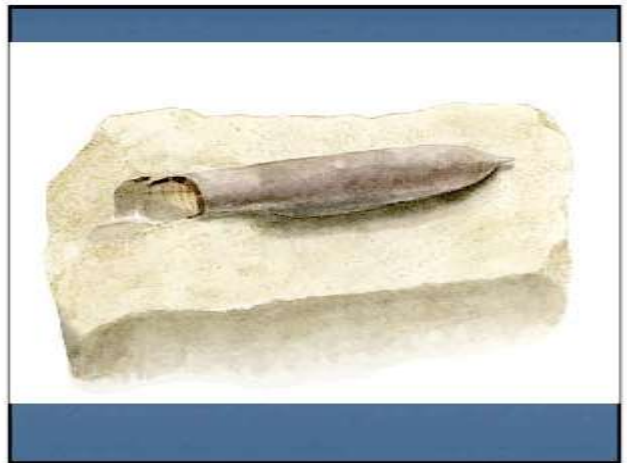


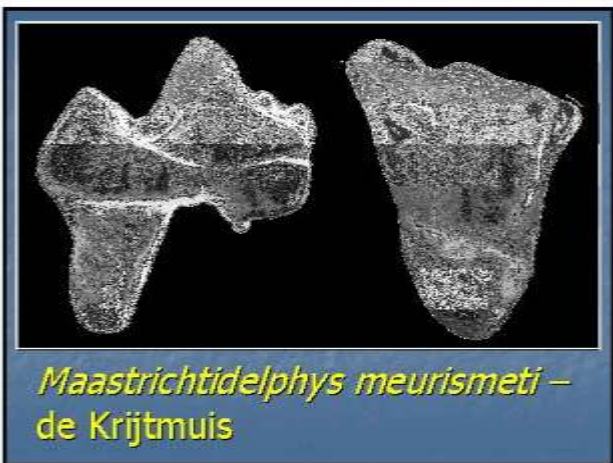


*Nothosaurus winterswijkensis*



KRIJT  
Maastrichtien









TERTIAIR Mioceen



TERTIAIR  
Mio/Plioceen



KWART



